

7. See [Figure 3-4](#). Assemble banjo bolt (3), washer (4), OIL PRESSURE GAUGE (1) banjo fitting and second washer onto adapter and tighten snugly.
8. Temporarily secure oil pressure gauge and hose to motorcycle frame with cable straps. Make sure gauge and hose assembly do not interfere with normal operation of the vehicle. Start engine and ride motorcycle at least 20 miles (32 km) at or above 50 mph (80 km/h) to allow engine to reach operating temperature.
  - a. At 2500 RPM, oil pressure will vary from 10-17 psi (69-117 kN/m<sup>2</sup>).
  - b. At idle speed (950-1050 RPM), oil pressure will vary from 7-12 psi (48-83 kN/m<sup>2</sup>).

**NOTE**

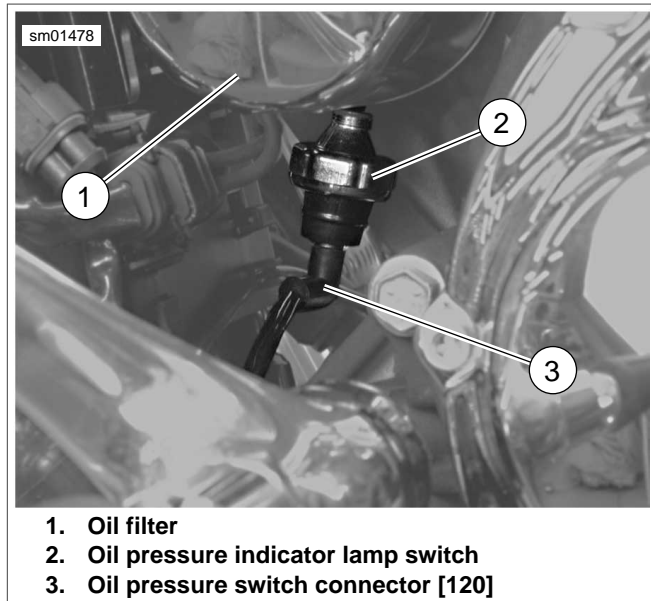
*For an accurate reading, engine oil should be at normal operating temperature: 230°F (110°C).*

9. Stop engine. Remove OIL PRESSURE GAUGE assembly from oil pressure indicator lamp switch mounting hole in crankcase. Cut cable straps that you installed in step 8. above, and remove banjo bolt, gauge assembly, washers and adapter from vehicle.
10. See [Figure 3-2](#). Coat threads of oil pressure switch (2) with LOCTITE 565 HIGH PERFORMANCE PIPE SEALANT with TEFLON. Reinstall oil pressure switch. Using OIL PRESSURE SENDING UNIT WRENCH, tighten switch snugly. DO NOT OVERTIGHTEN.
11. Plug in connector [120] (3) by pushing elbow connector straight up onto stud on oil pressure switch.
12. Install voltage regulator caddy and attach DC output connector and neutral switch wiring harness to caddy. See [7.28 MAIN WIRING HARNESS](#).

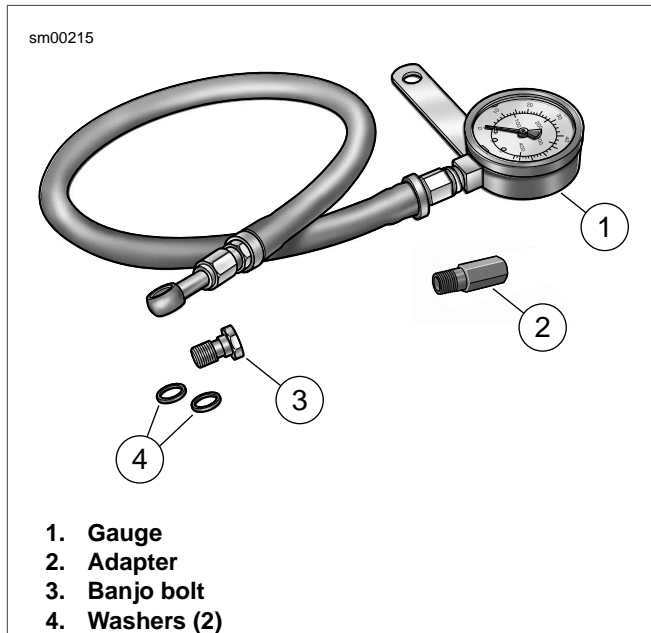
**NOTE**

*If an appreciable amount of oil leaked out when oil pressure switch was removed, it will have to be replaced with fresh oil.*

13. Check oil level in oil tank. See [1.5 ENGINE OIL AND FILTER](#). Top off oil level if necessary.
14. Start engine and test oil pressure switch for proper operation. Check oil pressure switch for leaks.



**Figure 3-2. Oil Pressure Indicator Lamp Switch**



**Figure 3-3. Oil Pressure Gauge Set (Part No. HD-96921-52B)**

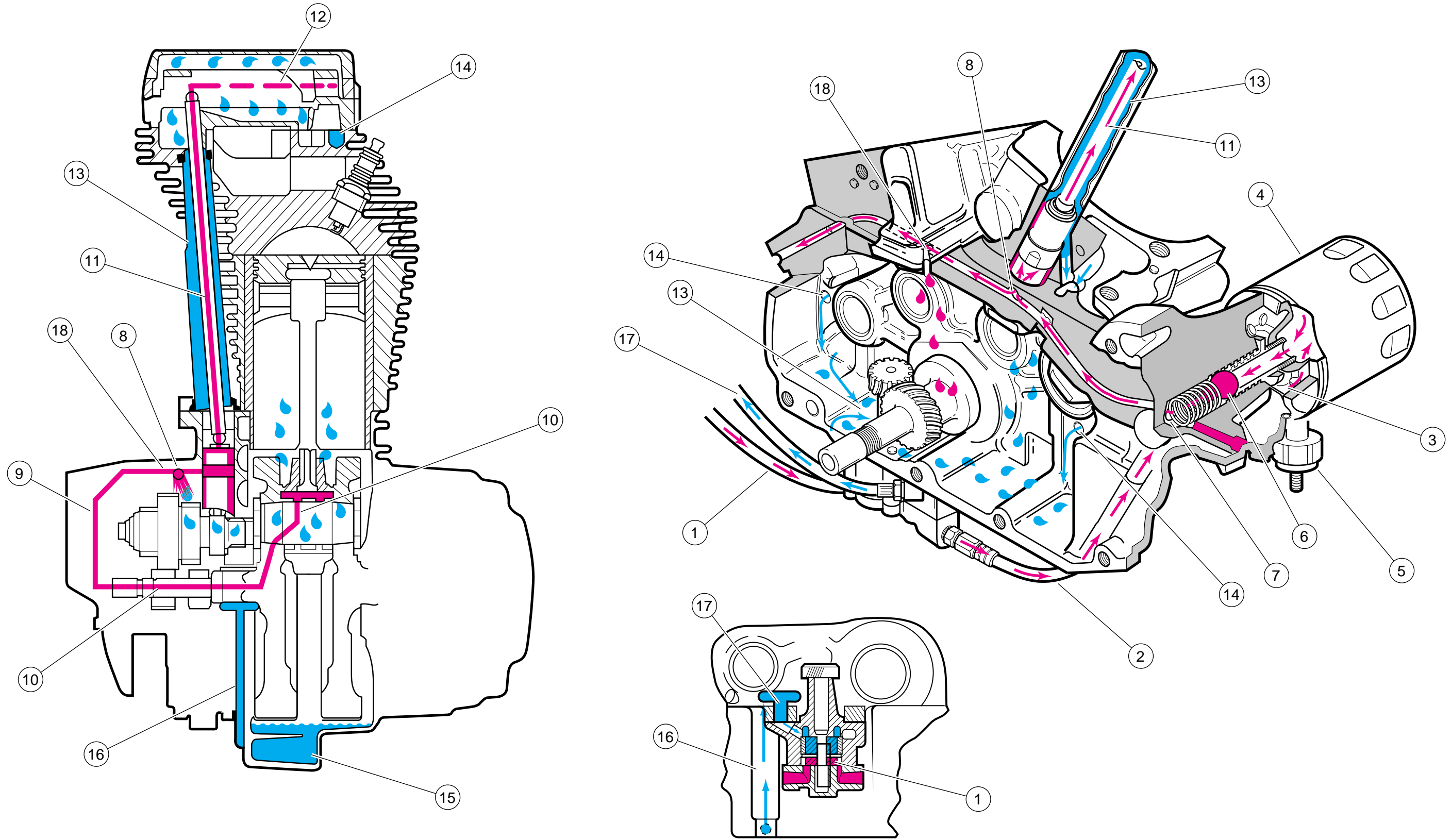


Figure 3-7. Lubrication Diagram (Red=Feed Oil, Blue=Return Oil)